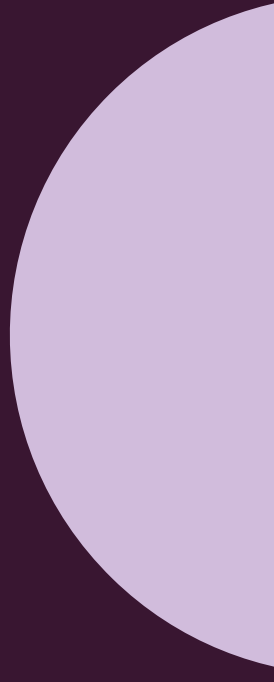




Kalmar EagleEye

Advanced Camera Solutions



Enhanced driver awareness

Kalmar EagleEye offers four different camera combos that can help enhance your driver's awareness while they are operating a Kalmar Reachstacker, Forklift or Empty Container Handler.

Each combo is a unique combination of sensors and cameras that connect to an in-cabin screen so your driver can see exactly what is going on around them, allowing them to operate their machine with a greater level of safety and confidence.

Tested and tried solution

Our four different camera combos have been extensively tested at our development centre and can either come factory fitted onto new machines or be retrofitted onto older Kalmar Reachstackers, Forklifts and Empty Container Handlers.



There are four different combinations to choose from:

Intro Combo* with its extension options, provides a cost-efficient introductory level camera system, covering the most commonly requested features such as reverse camera, reverse object detection and forward directed camera views.

Flex Combo offers additional flexibility compared to the Intro Combo by enabling up to four cameras to be connected to the system and for them to be displayed on a split screen monitor in the cabin. Allowing for dual camera options such as spreader or twistlock cameras.

Extend Combo delivers fully extended camera system. With a larger monitor enabling up to four cameras to be viewed simultaneously, which allows for both twistlock and spreader dual camera solutions to be displayed concurrently.

Pedestrian Detection System [PDS] offers a comprehensive solution, giving operators a full view around the machine identifying pedestrian proximity to minimise blind spots. This 360-degree system enhances workplace safety and significantly reduces the risk of accidents. It can also work in parallel with other combos.

* Already comes fitted as standard on all Kalmar Reachstackers, Medium and Heavy Electric Forklifts.



Choose the level that is right for you



The Intro Combination

With this combo you are able to get a clear view behind your machine at all times with a rear mounted camera and in cabin 7" touch screen display, which comes fitted as standard on all Reachstackers and our medium and Heavy Electric Forklifts.

The Intro Combo can be fitted as an option on other Forklifts and our Empty Container Handlers, there is also a range of optional extra's that you can choose from adding a camera or Reverse Warning Kit.

This combo includes:

- 7" touch screen with zoom function showing one view at a time, toggling between camera views
- 130° rear mounted Camera, Full HD 1080p.



Enhance the capability of this combo with these options:

- + Choose one of these cameras:
 - Forward Camera Mast (130°)
 - Forward Camera front of Inner Boom (130°)
 - Forward Camera front of Outer Boom (130°)
- + Reverse Warning Radar Kit with colour-coded overlay in display, indicating object proximity

The Flex Combo

With this combo you are able to see clearly behind your machine at all times with a rear mounted camera and in cabin 7" touch split screen display that can show two views at a time.

With this combo there are an extensive range of optional extra's that you can choose from adding up to three cameras or a Reverse Warning Kit.

This combo includes:

- 7" touch screen with zoom function showing two views at a time, toggling between camera views
- 130° rear mounted Camera, Full HD 1080p.



Enhance the capability of this combo with these options:

- + Choose up to three of these cameras:
 - Forward Camera Mast (130°)
 - Forward Camera front of Inner Boom (130°)
 - Forward Camera front of Outer Boom (130°)
 - Twist lock Cameras (2 units 150°)
 - Combi leg Cameras (2 units 150°)
 - Spreader Cameras (2 units 150°, Left & Right)
- + Reverse Warning Radar Kit with colour-coded overlay in display, indicating object proximity

The Extend Combo

The Extend Combo goes one step further with a 10" touch screen that shows up to four different views at one time, allowing you to see behind you and the view from four different cameras.

You can also choose to fit up to three additional camera's a Reverse Warning Kit, and/or a DVR digital video recorder to record everything your cameras capture.

This combo includes:

- 10" touch screen with zoom function showing four views at a time
- 130° rear mounted Camera, Full HD 1080p.



Enhance the capability of this combo with these options:

- + Choose up to three of these cameras:
 - Forward Camera Mast (130°)
 - Forward Camera front of Inner Boom (130°)
 - Forward Camera front of Outer Boom (130°)
 - Twist lock Cameras (2 units 150°)
 - Combi leg Cameras (2 units 150°)
 - Spreader Cameras (2 units 150°, Left & Right)
- + Reverse Warning Radar Kit with colour-coded overlay in display, indicating object proximity
- + DVR Digital Recorder in Cabin
- + 10" screen to enable additional four camera units, specific for reachstacker twist lock + combi leg cameras



An advanced 360° solution

The 360 PDS Combo or Pedestrian Detection

This innovative safety solution for equipment that operates in the same space as your team might be working has been designed to automatically alert your driver should anyone get too close to. This allows your driver to take evasive action, keeping your team, the machine and its load safe in all operating conditions.

360 Pedestrian Detection System [PDS] Combo

The 360 PDS Combo or Pedestrian Detection System provides your drivers with a 360° view of their surroundings on a 10" touch screen mounted in the cabin, detecting and alerting them when pedestrians are in their operational space. This allows the driver to take action to avoid any incidents or accidents with bystanders.

This advanced option can be enhanced further with additional radar sensors or by adding a parallel system.

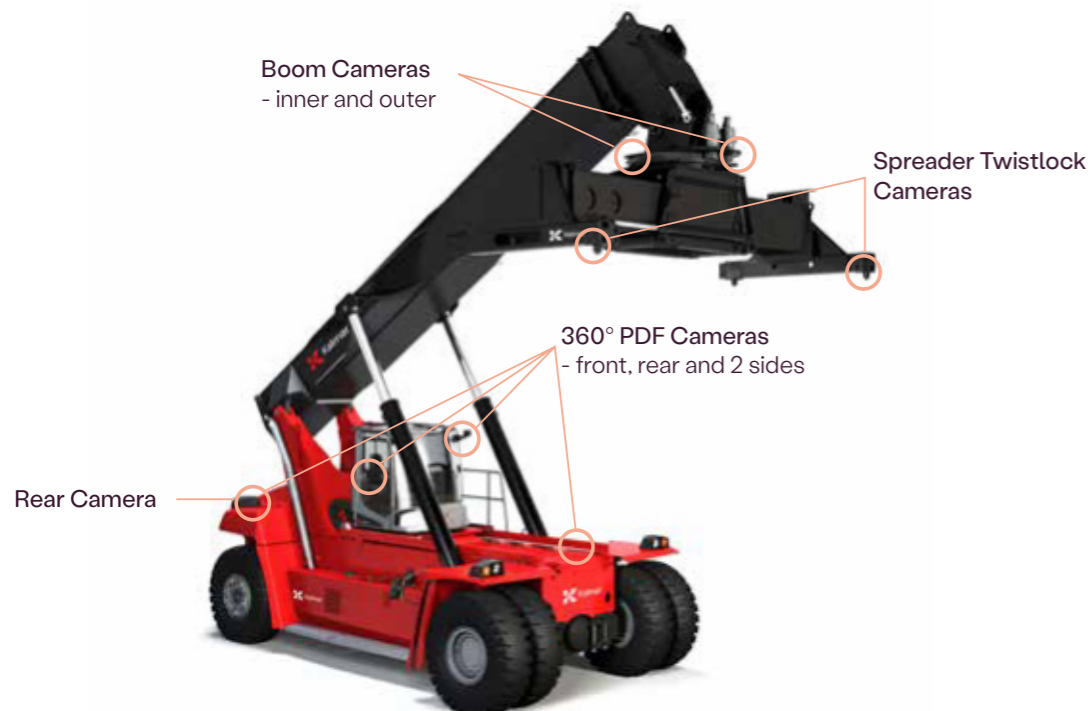
This combo includes:

- 10" touch screen with zoom function, 360° top view together with prioritised camera view triggered by direction or identified pedestrian
- 4 pcs image processing cameras 170°, 1080p mounted in four directions, able to detect pedestrians
- 360° connection box with integrated DVR and two inputs for radar sensors.



Enhance the capability of this combo with these options:

- + 2 radar sensors for object detection
- + Parallel platform (for additional boom or spreader cameras, a parallel system, detailed in Flex and Extend Combos, will be needed)



Specifications

Monitors	Resolution (px)	Dim (WxHxT, mm)	IP rating	Other
7" Single view (Intro Combo)	1024 x 600	203x112x28	IP67	
7" Split view (Flex Combo)	1024 x 600	203x112x28	IP69K	Zoom function, integrated speaker, radar visualisation graphics
10" Split view (Extend Combo)	1024 x 600	267x160x30	IP69K	
10" Split view (360 PDS Combo)	1024 x 600	267x160x30	IP69K	

Cameras	Resolution (px)	Operating temp.	IP rating	Other
Std Camera 130° view	1920 x 1080 (Full HD)	-20°C to +70°C	IP69K	Night vision with Smart-IR up to approx. 5 m range
Eyeball Camera 150° view	1920 x 1080 (Full HD)	-20°C to +70°C	IP69K	
PDS Camera 170° view	1920 x 1080 (Full HD)	-20°C to +70°C	IP69K	Image processing for pedestrian detection

Object detection radar	Detection range	Alert
Two radar sensors (L & R) +connection box with Intro, Flex & Extend Combos	0,2-40 m in up to 5 detection zones Angle measure rate 120°	Visual presentation in the monitor. Buzzer sound

DVR unit
Digital Video Recorder unit supporting four video channels 1080p. Supports memory storage up to 512 GB on up to four SD cards 128 GB each. One pre-installed 128GB SD card included. Additional external storage possible via USB connection. Wifi connectivity for preview and configuration. Multiple trigger functions available for activating recording (detailed information in manual).

360 PDS unit
Unit for combining input from four HD 1080p, image processing cameras. Encodes/decodes video stream to create composite image with seamless 360° birds-eye view including alerts and visual presentation of detected pedestrians. Integrated DVR supporting memory storage up to 1 TB, two SD cards of 512 GB each. One pre-installed 128GB SD card included. Integrated connection box to support two optional radar sensors.



Kalmar

www.kalmarglobal.com

Published by Kalmar. Copyright © Kalmar Corporation 2025.
All rights reserved.

